



Acquiring SPRAVATO® through the pharmacy channel

Spravato®
(esketamine) 
28 mg nasal spray 

Important Safety Information

WARNING: SEDATION; DISSOCIATION; RESPIRATORY DEPRESSION; ABUSE AND MISUSE; and SUICIDAL THOUGHTS AND BEHAVIORS

See full prescribing information for complete boxed warning

- **Risk for sedation, dissociation, and respiratory depression after administration. Monitor patients for at least two hours after administration (5.1, 5.2, 5.3).**
- **Potential for abuse and misuse. Consider the risks and benefits of using SPRAVATO® prior to use in patients at higher risk of abuse. Monitor for signs and symptoms of abuse and misuse (5.4).**
- **SPRAVATO® is only available through a restricted program called the SPRAVATO® REMS (5.5).**
- **Increased risk of suicidal thoughts and behaviors in pediatric and young adult patients taking antidepressants. Closely monitor all antidepressant-treated patients for clinical worsening and emergence of suicidal thoughts and behaviors. SPRAVATO® is not approved for use in pediatric patients (5.6).**

Indications:

SPRAVATO® (esketamine) CIII Nasal Spray is indicated for the treatment of:

- Treatment-resistant depression (TRD) in adults as monotherapy or in conjunction with an oral antidepressant.
- Depressive symptoms in adults with major depressive disorder (MDD) with acute suicidal ideation or behavior in conjunction with an oral antidepressant.

Limitations of Use:

- The effectiveness of SPRAVATO® in preventing suicide or in reducing suicidal ideation or behavior has not been demonstrated. Use of SPRAVATO® does not preclude the need for hospitalization if clinically warranted, even if patients experience improvement after an initial dose of SPRAVATO®.
- SPRAVATO® is not approved as an anesthetic agent. The safety and effectiveness of SPRAVATO® as an anesthetic agent have not been established.

Please see additional Important Safety Information on pages 6-8. Please see full [Prescribing Information](#), including Boxed WARNINGS, and [Medication Guide](#) for SPRAVATO®.

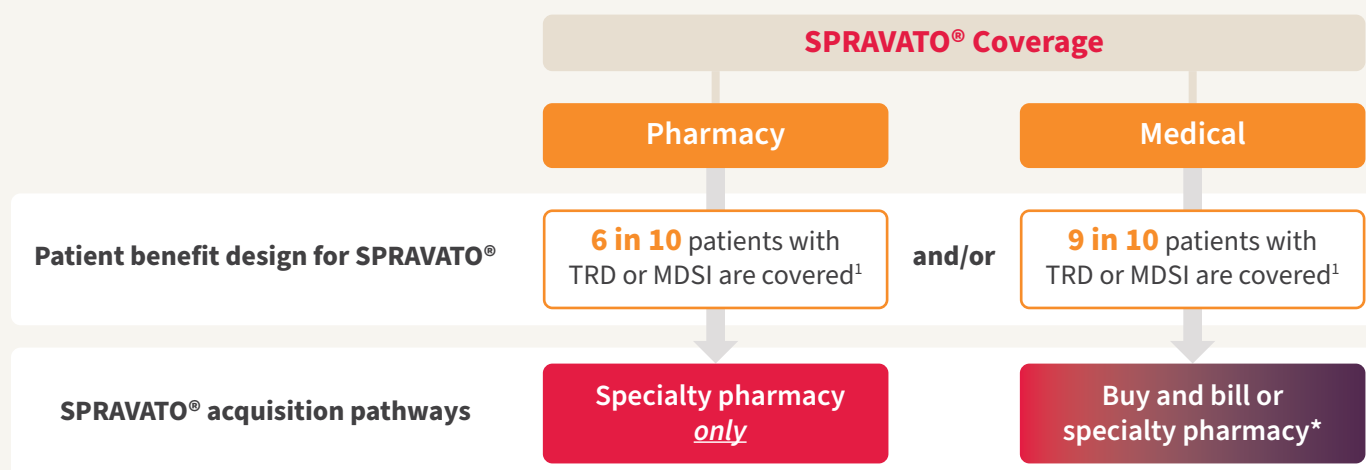
Understanding your patient's benefit design could help improve appropriate access to SPRAVATO®

The majority of patients have SPRAVATO® coverage through their health plan. However, a patient's benefit design may impact how you choose to acquire SPRAVATO®.

SPRAVATO® patients can be covered under a medical or pharmacy benefit depending on their health plan. Patients covered under a medical benefit will require a medical authorization to acquire SPRAVATO® through a specialty pharmacy.



To ensure appropriate acquisition, confirm the benefit design of your SPRAVATO® patients.



*Specialty pharmacy acquisition for patients covered under a medical benefit will require a medical authorization. Medical authorization is specific to a patient's health plan and the pharmacy's capability.



Considerations for acquiring SPRAVATO® through the pharmacy channel may include:

- ✓ Approximately 90% of payers mandate or prefer the use of a specific pharmacy¹
- ✓ Certain local pharmacies may not be able to perform medical authorization for patients covered under a medical benefit



Once a decision has been made to prescribe SPRAVATO®, enhanced services are offered with select national specialty pharmacies to support medical authorization for your patients.



Reference:

1. Data on file. Janssen Pharmaceuticals, Inc. Titusville, NJ.

Please see Important Safety Information on pages 6-8. Please see full Prescribing Information, including Boxed WARNINGS, and Medication Guide for SPRAVATO®.

Spravato®
(esketamine) 
28 mg nasal spray

Spravato with me

Once a decision has been made to prescribe SPRAVATO®, the Enhanced Service Pharmacy Network is available to increase patient support and improve patient access



Johnson & Johnson has contracted with a network of national **REMS-certified specialty Pharmacies** to provide a **dedicated toll-free number** with a live representative as an enhanced service.

As a core service, the specialty pharmacies below also **process medical authorizations**, provide patient education, and coordinate SPRAVATO® prescriptions to **help avoid fulfillment delays**.

Enhanced Service Pharmacy Network Contact Information*

Specialty Pharmacy Name	Contact Numbers	Hours of Operation
Accredo Health Group, Inc.	Phone: 877-861-8168 Fax: 888-454-8488	8:00 AM to 5:00 PM (ET), M-F 8:00 AM to 12:00 PM (ET), Sat
Walgreens Specialty Pharmacy	Phone: 800-458-2776 Fax: 888-332-2555	8:00 AM to 8:00 PM (ET), M-F
CVS Specialty®	Phone: 866-993-4779 Fax: 844-850-7915	8:00 AM to 9:00 PM (ET), M-F
Genoa Healthcare	Phone: 888-544-1329 Fax: 317-800-7713	9:30 AM to 5:30 PM (ET), M-F

*This represents a partial list of REMS-certified pharmacies supplying SPRAVATO®. It is not intended to serve as a comprehensive list. Johnson & Johnson does not endorse the use of any of the listed pharmacies in particular. These pharmacies were selected for inclusion on this list because of their geographic coverage, health plan coverage, and ability to fulfill and dispense Schedule III Controlled Substances. The information provided represents no statement, promise, or guarantee of Johnson & Johnson Neuroscience, Inc., concerning levels of reimbursement policies and determination processes. For a list of additional REMS-certified pharmacies, please contact the SPRAVATO® REMS Program at 1-855-382-6022.

Information listed is valid as of August 2024.

REMS = Risk Evaluation and Mitigation Strategy.

Please see Important Safety Information on pages 6-8. Please see full Prescribing Information, including Boxed WARNINGS, and Medication Guide for SPRAVATO®.

Spravato®
(esketamine) 
28 mg nasal spray

Spravato with *me*

Key considerations when acquiring SPRAVATO® through a specialty pharmacy

While each patient's situation is unique based on their specific plan, consider the following when choosing a specialty pharmacy to acquire SPRAVATO®.



Confirm your patient's coverage

- Determine whether SPRAVATO® is covered under medical benefit, pharmacy benefit, or both
 - If SPRAVATO® is covered under medical benefit, confirm that specialty pharmacy can perform medical authorization
 - If SPRAVATO® is covered under both medical and pharmacy benefits, check with the patient's insurance to determine if either is preferred
- Confirm prior authorization (PA) requirements, if any



Identify the specialty pharmacy requirements for your patient

- Determine whether the plan mandates or prefers a specific specialty pharmacy
- Ensure the designated specialty pharmacy is REMS-certified



Work closely with your patient's specialty pharmacy

- Establish prescription process with designated specialty pharmacy
- Submit required medical documentation and PA forms
- Shipping times can vary with specialty pharmacies, so plan patient treatment accordingly



As you support your patient, it is important to:

- Alert the patient to expect a confirmation phone call from the specialty pharmacy, which may have a number they do not recognize
- Inform patients that their specialty pharmacy may discuss SPRAVATO® affordability options and additional information may be required
- Understand that registration through the specialty pharmacy's portal may be required

Please see Important Safety Information on pages 6-8. Please see full Prescribing Information, including Boxed WARNINGS, and Medication Guide for SPRAVATO®.

Spravato®
(esketamine) 
28 mg nasal spray

Spravato with *me*

Once a decision has been made to prescribe SPRAVATO®

Johnson & Johnson can help you navigate SPRAVATO® access and affordability efficiently so you can focus on your patients

Eligible patients using commercial insurance pay as little as \$10 per treatment for SPRAVATO® medication



SPRAVATO withMe Savings Program

Treatment may include up to three devices administered on the same day. There are quantity limits and a maximum program benefit per calendar year. Offer subject to change or end without notice. Program does not cover the cost of treatment observation. Patients can participate without sharing their income information. See program requirements at [Spravatohcp.com/SavingsRequirements](https://spravatohcp.com/SavingsRequirements)

Eligible patients using commercial insurance pay \$0 after rebate for observation of each treatment

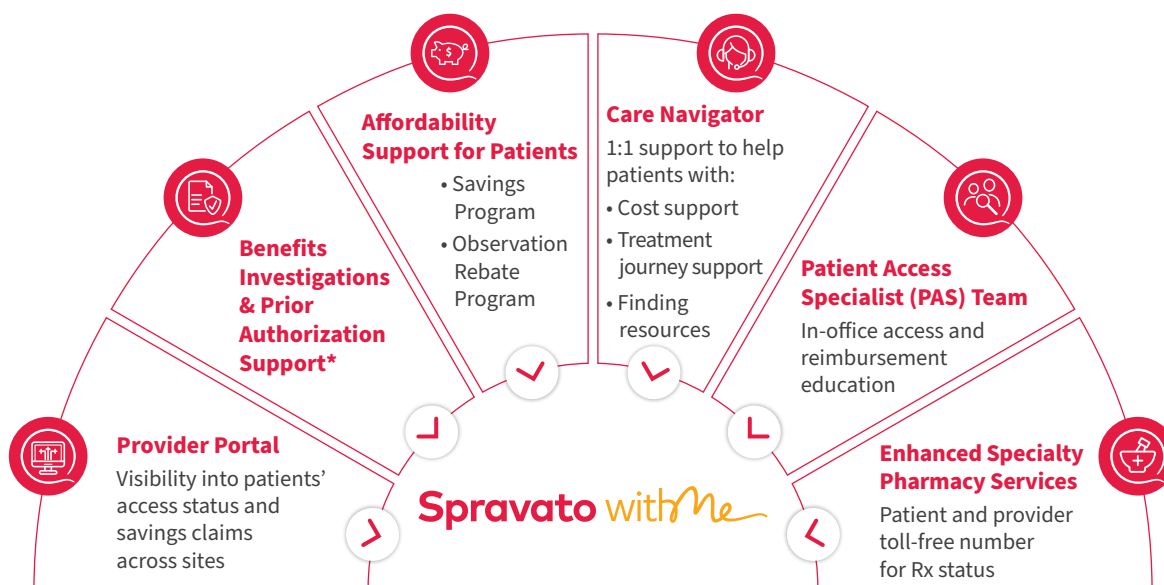


SPRAVATO withMe Observation Rebate Program

There is a limit to savings each year. Offer subject to change or end without notice. Not valid for residents of MA, MI, MN, or RI. Patients may participate without sharing their income information. Patients can view the program requirements at [Spravato.com/Observation](https://spravato.com/Observation)

96% OF PATIENTS who use the SPRAVATO withMe Savings Program fill their first SPRAVATO® prescription versus 72% of patients who do not use the Savings Program.²

SPRAVATO withMe provides support so you can focus on your patients



*SPRAVATO withMe automatically provides Prior Authorization form assistance, including status updates. Within the Patient Enrollment Form, you may choose not to receive Prior Authorization form assistance from SPRAVATO withMe.

The patient support and resources provided by SPRAVATO withMe are not intended to provide medical advice, replace a treatment plan from the patient's doctor or nurse, provide case management services, or serve as a reason to prescribe SPRAVATO®.

Learn more about SPRAVATO withMe



Learn more about how SPRAVATO withMe can help your patients at spravatohcp.com/spravato-with-me.

To find out more about SPRAVATO withMe or to enroll your patients, give us a call at **1-844-4S-WITHME** (1-844-479-4846), Monday through Friday, from 8:00 AM to 8:00 PM ET.

Reference:

2. IQVIA LAAD data for new commercial patients starting between 2019 and Sept 2023.

Please see Important Safety Information on pages 6-8. Please see full Prescribing Information, including Boxed WARNINGS, and Medication Guide for SPRAVATO®.

Spravato®
(esketamine) 
28 mg nasal spray

Spravato withMe

Important Safety Information

Indications:

SPRAVATO® (esketamine) CIII Nasal Spray is indicated for the treatment of:

- Treatment-resistant depression (TRD) in adults as monotherapy or in conjunction with an oral antidepressant.
- Depressive symptoms in adults with major depressive disorder (MDD) with acute suicidal ideation or behavior in conjunction with an oral antidepressant.

Limitations of Use:

- The effectiveness of SPRAVATO® in preventing suicide or in reducing suicidal ideation or behavior has not been demonstrated. Use of SPRAVATO® does not preclude the need for hospitalization if clinically warranted, even if patients experience improvement after an initial dose of SPRAVATO®.
- SPRAVATO® is not approved as an anesthetic agent. The safety and effectiveness of SPRAVATO® as an anesthetic agent have not been established.

Important Safety Information

WARNING: SEDATION; DISSOCIATION; RESPIRATORY DEPRESSION; ABUSE AND MISUSE; and SUICIDAL THOUGHTS AND BEHAVIORS

See full prescribing information for complete boxed warning

- **Risk for sedation, dissociation, and respiratory depression after administration. Monitor patients for at least two hours after administration (5.1, 5.2, 5.3).**
- **Potential for abuse and misuse. Consider the risks and benefits of using SPRAVATO® prior to use in patients at higher risk of abuse. Monitor for signs and symptoms of abuse and misuse (5.4).**
- **SPRAVATO® is only available through a restricted program called the SPRAVATO® REMS (5.5).**
- **Increased risk of suicidal thoughts and behaviors in pediatric and young adult patients taking antidepressants. Closely monitor all antidepressant-treated patients for clinical worsening and emergence of suicidal thoughts and behaviors. SPRAVATO® is not approved for use in pediatric patients (5.6).**

CONTRAINDICATIONS

SPRAVATO® is contraindicated in patients with:

- Aneurysmal vascular disease (including thoracic and abdominal aorta, intracranial and peripheral arterial vessels) or arteriovenous malformation.
- History of intracerebral hemorrhage.
- Hypersensitivity to esketamine, ketamine, or any of the excipients.

WARNINGS AND PRECAUTIONS

Sedation: SPRAVATO® may cause sedation or loss of consciousness. In some cases, patients may display diminished or less apparent breathing. In clinical trials, 48% to 61% of SPRAVATO®-treated patients developed sedation and 0.3% to 0.4% of SPRAVATO®-treated patients experienced loss of consciousness.

Because of the possibility of delayed or prolonged sedation, patients must be monitored by a healthcare provider for at least 2 hours at each treatment session, followed by an assessment to determine when the patient is considered clinically stable and ready to leave the healthcare setting.

Closely monitor for sedation with concomitant use of SPRAVATO® with CNS depressants (e.g., benzodiazepines, opioids, alcohol).

Dissociation: The most common psychological effects of SPRAVATO® were dissociative or perceptual changes (including distortion of time, space and illusions), derealization and depersonalization (61% to 84% of SPRAVATO®-treated patients developed dissociative or perceptual changes). Given its potential to induce dissociative effects, carefully assess patients with psychosis before administering SPRAVATO®; treatment should be initiated only if the benefit outweighs the risk.

Because of the risks of dissociation, patients must be monitored by a healthcare provider for at least 2 hours at each treatment session, followed by an assessment to determine when the patient is considered clinically stable and ready to leave the healthcare setting.

Respiratory Depression: In postmarketing experience, respiratory depression was observed with the use of SPRAVATO®. In addition, there were rare reports of respiratory arrest.

Because of the risks of respiratory depression, patients must be monitored for changes in respiratory status by a healthcare provider for at least 2 hours (including pulse oximetry) at each treatment session, followed by an assessment to determine when the patient is considered clinically stable and ready to leave the healthcare setting.

Abuse and Misuse: SPRAVATO® contains esketamine, a Schedule III controlled substance (CIII), and may be subject to abuse and diversion. Assess each patient's risk for abuse or misuse prior to prescribing and monitor all patients for the development of these behaviors or conditions, including drug-seeking behavior, while on therapy. Individuals with a history of drug abuse or dependence are at greater risk; therefore, use careful consideration prior to treatment of individuals with a history of substance use disorder and monitor for signs of abuse or dependence.

(continued on next page)

Please see additional Important Safety Information on pages 6-8. Please see full **Prescribing Information**, including **Boxed WARNINGS**, and **Medication Guide** for SPRAVATO®.

Spravato®
(esketamine) CIII
28 mg nasal spray

Spravato with Me

Important Safety Information (continued)

WARNINGS AND PRECAUTIONS (cont'd)

SPRAVATO® Risk Evaluation and Mitigation Strategy (REMS):

SPRAVATO® is available only through a restricted program called the SPRAVATO® REMS because of the risks of serious adverse outcomes from sedation, dissociation, respiratory depression, and abuse and misuse.

Important requirements of the SPRAVATO® REMS include the following:

- Healthcare settings must be certified in the program and ensure that SPRAVATO® is:
 - Only dispensed and administered in healthcare settings.
 - Patients treated in outpatient settings (e.g., medical offices and clinics) must be enrolled in the program.
 - Administered by patients under the direct observation of a healthcare provider and that patients are monitored by a healthcare provider for at least 2 hours after administration of SPRAVATO®.
- Pharmacies must be certified in the REMS and must only dispense SPRAVATO® to healthcare settings that are certified in the program.

Further information, including a list of certified pharmacies, is available at www.SPRAVATOREMS.com or 1-855-382-6022.

Suicidal Thoughts and Behaviors in Adolescents and Young Adults:

In pooled analyses of placebo-controlled trials of antidepressant drugs (SSRIs and other antidepressant classes) that included adult and pediatric patients, the incidence of suicidal thoughts and behaviors in patients age 24 years and younger was greater than in placebo-treated patients. SPRAVATO® is not approved in pediatric (<18 years of age) patients.

There was considerable variation in risk of suicidal thoughts and behaviors among drugs, but there was an increased risk identified in young patients for most drugs studied.

Monitor all antidepressant-treated patients for clinical worsening and emergence of suicidal thoughts and behaviors, especially during the initial few months of drug therapy and at times of dosage changes. Counsel family members or caregivers of patients to monitor for changes in behavior and to alert the healthcare provider. Consider changing the therapeutic regimen, including possibly discontinuing SPRAVATO® and/or the concomitant oral antidepressant, in patients whose depression is persistently worse, or who are experiencing emergent suicidal thoughts or behaviors.

Increase in Blood Pressure: SPRAVATO® causes increases in systolic and/or diastolic blood pressure (BP) at all recommended doses. Increases in BP peak approximately 40 minutes after SPRAVATO® administration and last approximately 4 hours.

Approximately 3% to 19% of SPRAVATO®-treated patients experienced an increase of more than 40 mmHg in systolic BP and/or 25 mmHg in diastolic BP in the first 1.5 hours after administration at least once during the first 4 weeks of treatment. A substantial increase in blood pressure could occur after any dose administered even if smaller blood pressure effects were observed with previous administrations. SPRAVATO® is contraindicated in patients for whom an increase in BP or intracranial pressure poses a serious risk (e.g., aneurysmal vascular disease, arteriovenous malformation, history of intracerebral hemorrhage). Before prescribing SPRAVATO®, patients with other cardiovascular and cerebrovascular conditions should be carefully assessed to determine whether the potential benefits of SPRAVATO® outweigh its risk.

Assess BP prior to administration of SPRAVATO®. In patients whose BP is elevated prior to SPRAVATO® administration (as a general guide: >140/90 mmHg), a decision to delay SPRAVATO® therapy should take into account the balance of benefit and risk in individual patients.

BP should be monitored for at least 2 hours after SPRAVATO® administration. Measure blood pressure around 40 minutes post-dose and subsequently as clinically warranted until values decline. If BP remains high, promptly seek assistance from practitioners experienced in BP management. Refer patients experiencing symptoms of a hypertensive crisis (e.g., chest pain, shortness of breath) or hypertensive encephalopathy (e.g., sudden severe headache, visual disturbances, seizures, diminished consciousness, or focal neurological deficits) immediately for emergency care.

Closely monitor blood pressure with concomitant use of SPRAVATO® with psychostimulants (e.g., amphetamines, methylphenidate, modafinil, armodafinil) or monoamine oxidase inhibitors (MAOIs).

In patients with a history of hypertensive encephalopathy, more intensive monitoring, including more frequent blood pressure and symptom assessment, is warranted because these patients are at increased risk for developing encephalopathy with even small increases in blood pressure.

(continued on next page)

Please see additional Important Safety Information on pages 6-8. Please see full Prescribing Information, including Boxed WARNINGS, and Medication Guide for SPRAVATO®.

Spravato®
(esketamine) 
28 mg nasal spray

Spravato with Me

Important Safety Information (continued)

WARNINGS AND PRECAUTIONS (cont'd)

Cognitive Impairment

Short-Term Cognitive Impairment: In a study in healthy volunteers, a single dose of SPRAVATO® caused cognitive performance decline 40 minutes post-dose. Compared to placebo-treated subjects, SPRAVATO®-treated subjects required a greater effort to complete the cognitive tests at 40 minutes post-dose. Cognitive performance and mental effort were comparable between SPRAVATO® and placebo at 2 hours post-dose. Sleepiness was comparable after 4 hours post-dose.

Long-Term Cognitive Impairment: Long-term cognitive and memory impairment have been reported with repeated ketamine misuse or abuse. In 1-year and 3-year, long-term, open-label clinical trials in adults, the effect of SPRAVATO® on cognitive functioning remained stable over time as evaluated by the Cogstate computerized battery and Hopkins Verbal Learning Test-Revised.

Impaired Ability to Drive and Operate Machinery: Before SPRAVATO® administration, instruct patients not to engage in potentially hazardous activities requiring complete mental alertness and motor coordination, such as driving a motor vehicle or operating machinery, until the next day following a restful sleep. Patients will need to arrange transportation home following treatment with SPRAVATO®.

Ulcerative or Interstitial Cystitis: Cases of ulcerative or interstitial cystitis have been reported in individuals with long-term off-label use or misuse/abuse of ketamine. In clinical studies with SPRAVATO® nasal spray, there was a higher rate of lower urinary tract symptoms (pollakiuria, dysuria, micturition urgency, nocturia, and cystitis) in SPRAVATO®-treated patients than in placebo-treated patients. No cases of esketamine-related interstitial cystitis were observed in any of the studies, which involved treatment for up to a year. Monitor for urinary tract and bladder symptoms during the course of treatment with SPRAVATO® and refer to an appropriate healthcare provider as clinically warranted.

PREGNANCY, EMBRYO-FETAL TOXICITY, AND LACTATION

SPRAVATO® is not recommended during pregnancy. SPRAVATO® may cause fetal harm when administered to pregnant women. Advise pregnant women of the potential risk to an infant exposed to SPRAVATO® *in utero*. Advise women of reproductive potential to consider pregnancy planning and prevention.

There are risks to the mother associated with untreated depression in pregnancy. If a woman becomes pregnant while being treated with SPRAVATO®, treatment with SPRAVATO® should be discontinued and the patient should be counseled about the potential risk to the fetus.

Pregnancy Exposure Registry: There is a pregnancy exposure registry that monitors pregnancy outcomes in women exposed to antidepressants, including SPRAVATO®, during pregnancy. Healthcare providers are encouraged to register patients by contacting the National Pregnancy Registry for Antidepressants at 1-844-405-6185 or online at <https://womensmentalhealth.org/research/pregnancyregistry/antidepressants/>.

SPRAVATO® is present in human milk. Because of the potential for neurotoxicity, advise patients that breastfeeding is not recommended during treatment with SPRAVATO®.

SELECT USE IN SPECIFIC POPULATIONS

Geriatric Use: No overall differences in the safety profile were observed between patients 65 years of age and older and patients younger than 65 years of age. At the end of a 4-week, randomized, double-blind study, there was no statistically significant difference between groups on the primary efficacy endpoint.

Hepatic Impairment: SPRAVATO®-treated patients with moderate hepatic impairment may need to be monitored for adverse reactions for a longer period of time.

SPRAVATO® has not been studied in patients with severe hepatic impairment (Child-Pugh class C). Use in this population is not recommended.

ADVERSE REACTIONS

TRD: The most commonly observed adverse reactions in patients treated with SPRAVATO® plus oral antidepressant (incidence ≥5% and at least twice that of placebo nasal spray plus oral antidepressant) were dissociation, dizziness, nausea, sedation, vertigo, hypoesthesia, anxiety, lethargy, blood pressure increased, vomiting, and feeling drunk.

Treatment of depressive symptoms in adults with MDD with acute suicidal ideation or behavior: The most commonly observed adverse reactions in patients treated with SPRAVATO® plus oral antidepressant (incidence ≥5% and at least twice that of placebo nasal spray plus oral antidepressant) were dissociation, dizziness, sedation, blood pressure increased, hypoesthesia, vomiting, euphoric mood, and vertigo.

The most common adverse reactions with SPRAVATO® TRD monotherapy (≥5% and at least twice that of placebo nasal spray) were dissociation, nausea, dizziness, headache, anxiety, vomiting, feeling drunk, blood pressure increased, and sedation.

Please see full Prescribing Information, including Boxed WARNINGS, and Medication Guide for SPRAVATO® in pocket.

cp-170362v7

Please see additional Important Safety Information on pages 6-8. Please see full Prescribing Information, including Boxed WARNINGS, and Medication Guide for SPRAVATO®.

© Johnson & Johnson and its affiliates 2025 03/25 cp-468801v2

Johnson & Johnson

Spravato®
(esketamine) 
28 mg nasal spray

Spravato with Me